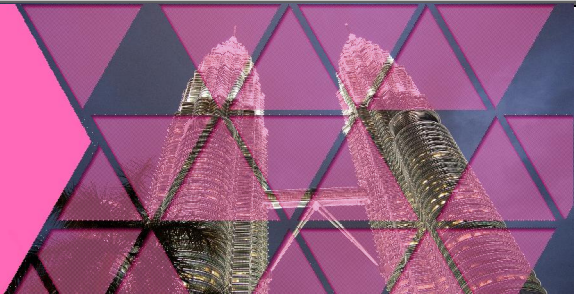


# KUALA LUMPUR 吉隆坡

3 Days 2 nights Hotel Package

Ex HKG valid for travel between 29Mar-30Jun22



Issued on 29Mar21

Ref: CX1KUL0306/2N-AC200PP EN100PN

(Min. 2 Adults)

Booking Class	Applicable Flights
Q	Valid on CX operated flights only
Please refer to the last page for airfare surcharge	

 Tourism Tax of MYR 10 per room per night applies and payable to hotel upon check-out.

## SELANGOR

### Sunway Clio Hotel

[www.sunwayhotels.com](http://www.sunwayhotels.com)

**Adult sharing Twin: HKD3350 up**

Room Category: Deluxe Plus



Remark: Sunway Lagoon Theme Park will be closed on every Tuesday

Extension Night: HKD560 up



## KUALA LUMPUR CITY

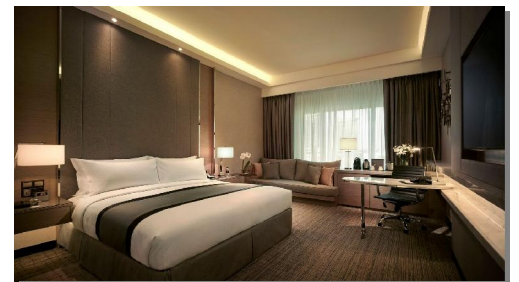
### JW Marriott

[www.marriott.com](http://www.marriott.com)

**Adult sharing Twin: HKD3550 up**

Room Category: Superior Room

Extension Night: HKD740 up



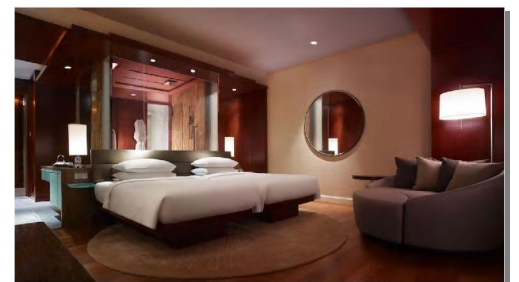
### Grand Hyatt Kuala Lumpur

<http://kualalumpur.grand.hyatt.com>

**Adult sharing Twin: HKD3990 up**

Room Category: Twin Bed Room

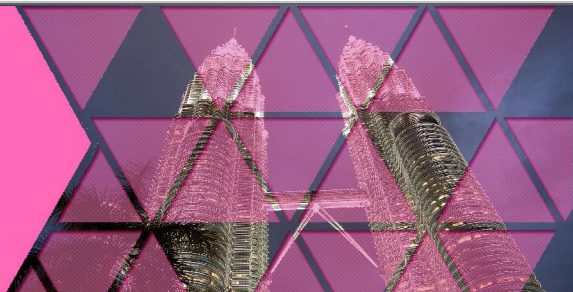
Extension Night: HKD1200 up



# KUALA LUMPUR 吉隆坡

## 3 Days 2 nights Hotel Package

### Ex HKG valid for travel between 29Mar-30Jun22



Issued on 29Mar21

Ref: CX1KUL0306/2N-AC200PP EN100PN

**(Min. 2 Adults)**

Booking Class	Applicable Flights
Q	Valid on CX operated flights only
Please refer to the last page for airfare surcharge	


**Tourism Tax of MYR 10 per room per night applies and payable to hotel upon check-out.**

Package price in HKD per person/Extra night in HKD per room

District 地區	Hotel 酒店	Cat. 級數	Room Cat. 房間種類	Adult Half Twin 成人佔半房	Adult Single 成人單人房	Extension Night Single / Twin 延期住宿每房每晚	Remark 備注
KUALA LUMPUR CITY CENTRE	Dorsett Kuala Lumpur (formerly Dorsett Regency Kuala Lumpur)	4	Dorsett Room	3150 up	3450 up	420 up / 420 up	<a href="http://www.dorsettregency.com.my">www.dorsettregency.com.my</a>
	Berjaya Times Square	4	Premier	3250 up	3650 up	520 up / 520 up	<a href="http://www.berjayahotel.com">www.berjayahotel.com</a>
	Pulse Grande Hotel (Formerly known as Putrajaya Shangri-La)	5	Deluxe Park View	3250 up	3650 up	510 up / 510 up	<a href="http://www.shangri-la.com/en">www.shangri-la.com/en</a>
	Novotel Kuala Lumpur City Centre	4	Deluxe Room	3290 up	3750 up	570 up / 570 up	<a href="http://www.novotel.com/">www.novotel.com/</a>
	Grand Millennium (formerly Regent)	5	Superior	3390 up	3990 up	690 up / 690 up	<a href="http://www.millenniumhotels.com">www.millenniumhotels.com</a>
	Hilton	5	Deluxe	3450 up	4050 up	720 up / 720 up	<a href="http://www.kuala-lumpur.hilton.com">www.kuala-lumpur.hilton.com</a>
	Traders	4	Deluxe	3590 up	4390 up	900 up / 900 up	<a href="http://www.shangri-la.com/en">www.shangri-la.com/en</a>
	Mandarin Oriental	5	Deluxe City View	3690 up	4550 up	980 up / 980 up	<a href="http://www.mandarinoriental.com">www.mandarinoriental.com</a>
	The Ritz Carlton	5	Deluxe	3690 up	4550 up	980 up / 980 up	<a href="http://www.ritzcarlton.com/">www.ritzcarlton.com/</a>
SELANGOR	Avani Sepang Goldcoast Resort (Formerly Golden Palm Tree Resort & Spa)	5	Superior	3550 up	4250 up	820 up / 820 up	<a href="http://www.avanihotels.com/sepang">www.avanihotels.com/sepang</a>
				4 Pax	3 Pax		
			Family Villa	3490 up	3750 up	1330 up / 1330 up	

Departure Date	Surcharge Amount	Class Code
29Mar-30Mar21, 05Apr-22Dec21, 27Dec-28Jan22, 04Feb-12Apr22, 17Apr-30Jun22	No Surcharge	Q
	HKD200/Adult, HKD150/Child	N
	HKD800/Adult, HKD600/Child	S
	HKD1200/Adult, HKD900/Child	V
29Mar-30Jun22	HKD1600/Adult, HKD1200/Child	L
	HKD2100/Adult, HKD1580/Child	M
	Premium Economy	
29Mar-30Mar21, 05Apr-22Dec21, 27Dec-28Jan22, 04Feb-12Apr22, 17Apr-30Jun22	HKD2790/Adult, HKD2100/Child	E
	29Mar-30Jun22	HKD3840/Adult, HKD2880/Child
Business Class		
29Mar-30Mar21, 05Apr-22Dec21, 27Dec-28Jan22, 04Feb-12Apr22, 17Apr-30Jun22	HKD5240/Adult, HKD3930/Child	I
	29Mar-30Jun22	HKD7740/Adult, HKD5810/Child

Prices are inclusive of:	Remarks:
<ul style="list-style-type: none"> <li>&gt; Roundtrip economy class air ticket from Hong Kong to Kuala Lumpur by Cathay Pacific Airways (CX)</li> <li>&gt; 2 nights hotel accommodation at your choice with daily ABF</li> <li>&gt; Child half Twin or Extra bed – Adult Rate less HKD640</li> <li>&gt; Child no bed without breakfast: HKD2250 per person</li> <li>&gt; 0.15% TIC Levy</li> </ul>	<ul style="list-style-type: none"> <li>&gt; Booking Class: "Q" Class</li> <li>&gt; Ticket Validity: 2 - 7 Days</li> <li>&gt; Package prices are subject to the Hong Kong Passenger Security Charge, taxes and other surcharges.</li> <li>&gt; Valid on Flight Date Shown Only</li> <li>&gt; Min. 2 Adults must travel together on both inbound &amp; outbound flight and check in together</li> <li>&gt; Booking must be under One PNR and "CX GV2 Fare IN (Date) OUT (Date) at XXX Hotel" must be input in OSI field</li> <li>&gt; <b>NON-Refundable for all No Show Booking</b></li> <li>&gt; All prices &amp; conditions are subject to change without prior notice</li> </ul>

**\*\* This package is under the protection of TIC Compensation Fund. \*\***