

PENANG 檳城

3 Days 2 nights Hotel Package

Ex HKG valid for travel between 29Mar-30Jun22



Issued on 29Mar21

Ref: CX1PEN0306/2N-AC200PP EN100PN
(Min. 2 Adults)

Booking Class	Applicable Flights
Q	Valid on CX operating Flights
Please refer to the last page for airfare surcharge	

! Tourism Tax of MYR 10 per room per night applies and payable to hotel upon check-out.

PENANG CITY

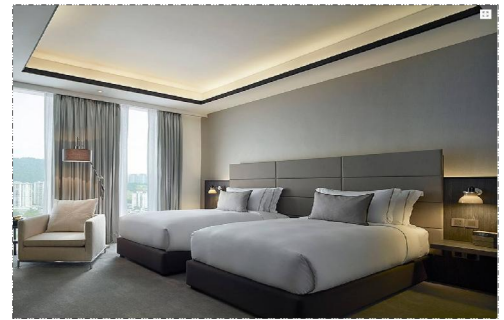
G Hotel Kelawai

<http://ghotelkelawai.com.my>

Adult sharing Twin: HKD4150 up

Room Category: Deluxe Room

Extension Night: HKD1050 up

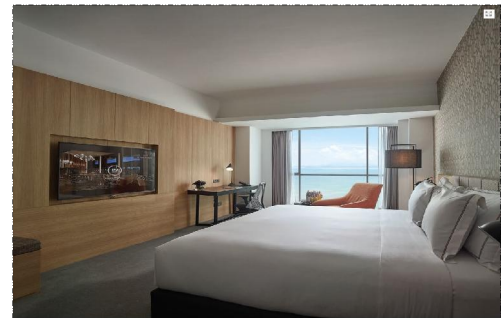


G Hotel Gurney

www.ghotel.com.my

Adult sharing Twin: HKD4090 up

Room Category: Deluxe Room



Extension Night: HKD1010 up

BEACH AREA

Golden Sands Resort by Shangri-La

<http://www.shangri-la.com/>

Adult sharing Twin: HKD3750 up

Room Category: Superior Room



Extension Night: HKD650 up

PENANG 檳城

3 Days 2 nights Hotel Package

Ex HKG valid for travel between 29Mar-30Jun22

Issued on 29Mar21

Ref: CX1PEN0306/2N-AC200PP EN100PN

(Min. 2 Adults)

Booking Class	Applicable Flights
Q	Valid on CX operating Flights
Please refer to the last page for airfare surcharge	

! Tourism Tax of MYR 10 per room per night applies and payable to hotel upon check-out.

Price per person in HKD / Extra night in HKD per room

District 地區	Hotel 酒店	Cat. 級數	Room Cat. 房間種類	Adult Half Twin 成人佔半房	Adult Single 成人單人房	Extension Night Single / Twin 延期住宿每房每晚	Remark 備注
City Hotel	Hotel Sentral Georgetown	3	Superior	3350 up	3550 up	310 up / 310 up	www.hotelsentralgeorgetown.com.my
	Sunway Hotel Georgetown	4	Deluxe	3450 up	3790 up	450 up / 450 up	https://georgetown.sunwayhotels.com
	Eastern & Oriental Hotel	5	Studio Suite	3890 up	4650 up	880 up / 880 up	www.e-o-hotel.com
Beach Area	Parkroyal (Formerly Grand Plaza Parkroyal)	4	Superior	3650 up	4190 up	640 up / 640 up	www.penang.parkroyalhotels.com
	Hard Rock	4	Deluxe	3850 up	4550 up	810 up / 810 up	http://penang.hardrockhotels.net/
	Lone Pine Boutique Hotel By The Beach	4	Deluxe Sea Front	3850 up	4550 up	810 up / 810 up	www.lonepinehotel.com
	Shangri-La's Rasa Sayang Resort & Spa	5	Deluxe Garden View	3990 up	4890 up	1000 up / 1000 up	www.shangri-la.com

Departure Date	Surcharge Amount		Class Code
	No Surcharge		Q
29Mar-30Mar21, 05Apr-22Dec21, 27Dec-28Jan22, 04Feb-12Apr22, 17Apr-30Jun22	HKD200/Adult, HKD150/Child		N
	HKD800/Adult, HKD600/Child		S
	HKD1200/Adult, HKD900/Child		V
29Mar-30Jun22	HKD1600/Adult, HKD1200/Child		L
	HKD2100/Adult, HKD1580/Child		M
Premium Economy			
29Mar-30Mar21, 05Apr-22Dec21, 27Dec-28Jan22, 04Feb-12Apr22, 17Apr-30Jun22	HKD2790/Adult, HKD2100/Child		E
	29Mar-30Jun22		HKD3840/Adult, HKD2880/Child
Business Class			
29Mar-30Mar21, 05Apr-22Dec21, 27Dec-28Jan22, 04Feb-12Apr22, 17Apr-30Jun22	HKD5240/Adult, HKD3930/Child		I
	29Mar-30Jun22		HKD7740/Adult, HKD5810/Child

Prices inclusive of:

- > Roundtrip economy class air ticket from Hong Kong to Penang by Cathay Pacific Airways (CX)
- > 2 nights hotel accommodation at your choice with daily ABF
- > Child half Twin or Extra bed – Adult Rate less HKD720
- > Child no bed without breakfast: HKD2490 per person
- > 0.15% TIC Levy

Remarks:

- > Booking Class: "Q" Class
- > Ticket Validity: 2 - 7 Days
- > Package prices are subject to the Hong Kong Passenger Security Charge, taxes and other surcharges.
- > Valid on Flight Date Shown Only
- > Min. 2 Adults must travel together on both inbound & outbound flight and check in together
- > Booking must be under One PNR and "CX GV2 Fare IN (Date) OUT (Date) at XXX Hotel" must be input in OSI field
- > **NON-Refundable for all No Show Booking**
- > All prices & conditions are subject to change without prior notice

****This package is under the protection of TIC Compensation Fund****